

1.

1.1

5

140792.15 m²

127197.39 m²

13594.76 m²

31753.67 m²

1.2

140792.15 m²

31753.67 m²

1.2-1

2000

1.2-1

1.2-1



2.

2.1

2.1.1

10

10

2.1.2

Google earth

5

2009	4			
114000 m ²		13000 m ²		1
2009	4			11
			5600 m ²	
2012	8			
2014	12		5	
2019	6	10		
2014	12		2014	12
				5
		2019		10

2.2

800 m

700 m

800 m

2.3

2.3.1

2017

70 m

300 m

10

5

10

500 m

330 m 5

500 m

330 m

5

5

2.3.2

Google earth

2017

2017

70 m

300 m

2014 2014 12

2004 2004 12 2014

5 2019 10

2009 2009

2014

5

2014

5

2.4

800 m

2.5

800 m 3

160 m

1958

70 km

16 m³/s 120

m³/s

2.6

	2014	12			5
				10	
2014	12		2014	12	5
			10		
					5

GB 36600-2018

3.

3.1

1		2.00 m			
Qml			1		2
2	1.80	13.50 m			Qml
2			Q ₄ ³ al		1
	Q ₄ ² m			1	3
					~
3	13.50	14.50 m			Q ₄ ¹ h

3.2

0.266 1.015 m

0.749 m

0.8

4.

4.1

4.1.1

140792.15 m²

127197.39 m²

13594.76 m²

31753.67

m²

80 80 m

S9 S8

20 m

3

0.2 0.5 m

1

2

3.00 m 5.00 m

2.00 m

2.0

m 1

2

4.00 m

3.20 m~4.60 m 1

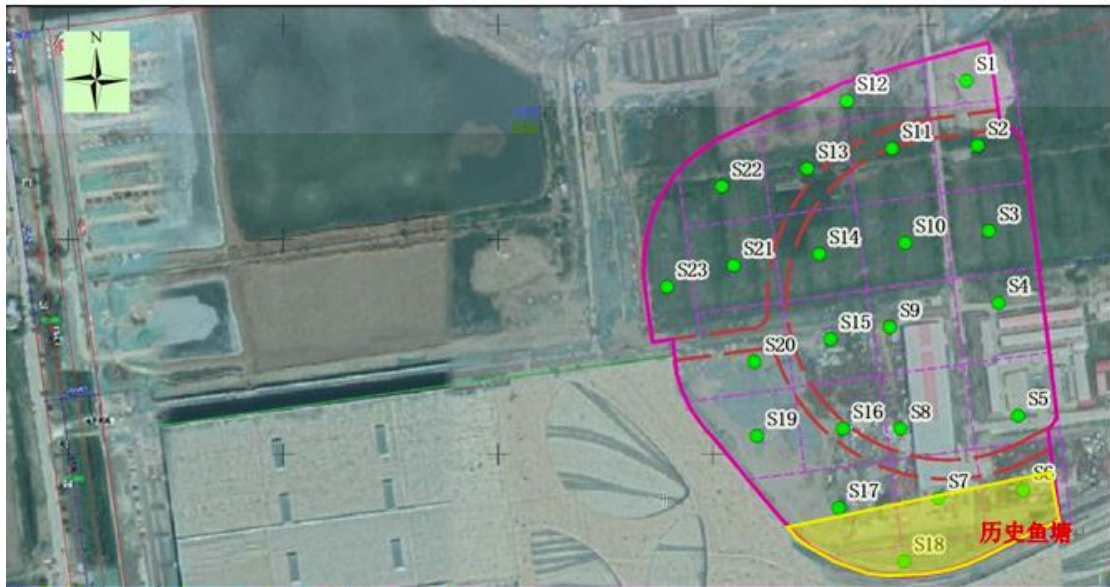
1

6.0 m

12.0 m

6.0 m

12.0 m



4.1- 1

4.1.2

140792.15 m²

31753.67 m²

13000 m²

4

SW1

SW6

SW19

SW22

SW6

SW22

SW6-1

SW22-1

3

SW25 SW28 SW29

SW2

SW25-1

4.1-1

4.1-1

4.1- 1

	m	X	Y	mm	mm	m	m	m
SW1	6.0	4322573.62 1	513332.97 6	113	63	0~1.0	1.0~5.5	5.5~6.0
SW6	6.0	4322190.2 27	513386.6 34	113	63	0~1.0	1.0~5.5	5.5~6.0
SW6-1	12.0	4322193.4 64	513386.8 12	113	63	0~6.0	6.0~11. 0	11.0~12. 0
SW19	6.0	4322242.6 65	513138.6 84	113	63	0~1.0	1.0~5.5	5.5~6.0
SW22	6.0	4322477.0						

4.2- 1

1	mg/kg 19.1	mg/kg 3.97	mg/kg 9.11	122	122	% 100
---	---------------	---------------	---------------	-----	-----	----------

mg/L mg/L mg/L mg/L

	0.2-12.0 m	6.0 m	12.0 m
0.5 m	122	10	
	pH		
	C ₁₀ -C ₄₀		
	1		
100%	0%	2	C ₁₀ -C ₄₀
100%	230 mg/kg		10 mg/kg 3
VOCs	SVOCs		
	1	9	
	100%		40%
	2		C ₁₀ ~C ₄₀
3	1,2-	10%	SVOCs

5.

5.1

1

1

GB36600-2018

2

DB11/T811-2011

2

1

GB/T 14848-2017

2

C₁₀-C₄₀

2020 4

5.2

GB36600-2018

DB11/T811-2011

GB/T 14848-2017

C10-C40

2020 4

5.3

10