



C8 **2.6**

1

1.1

2.6

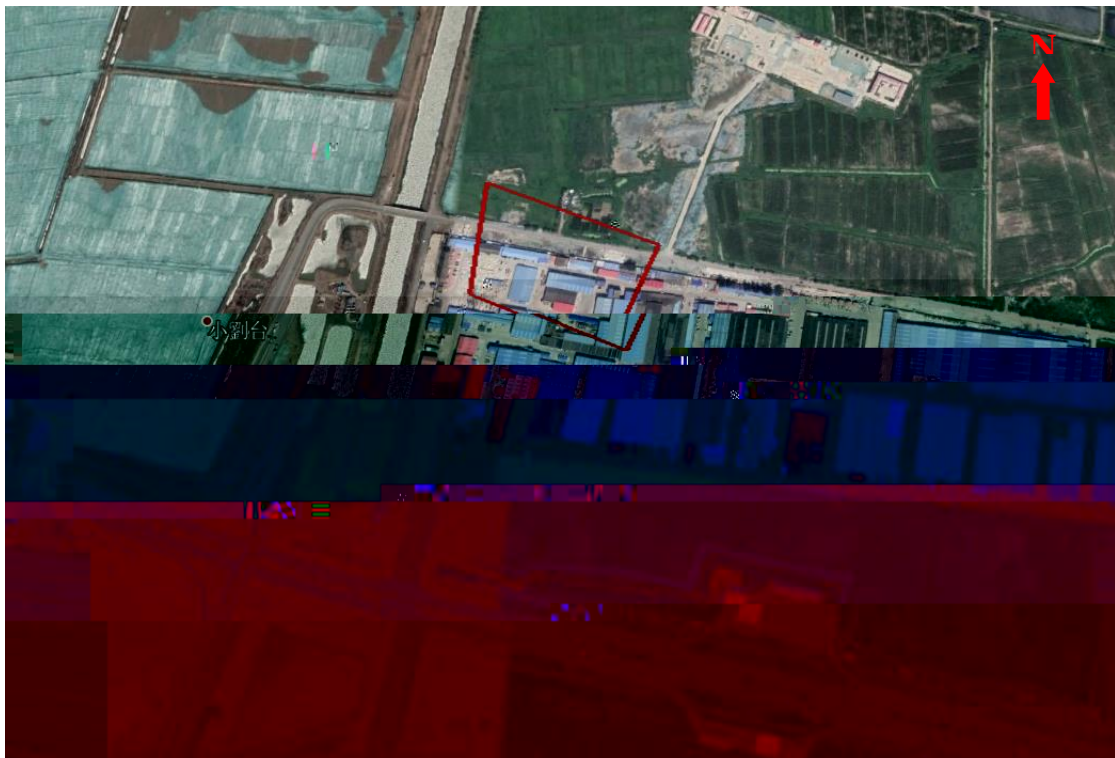
C8

38320.35m²

1.1

1.1

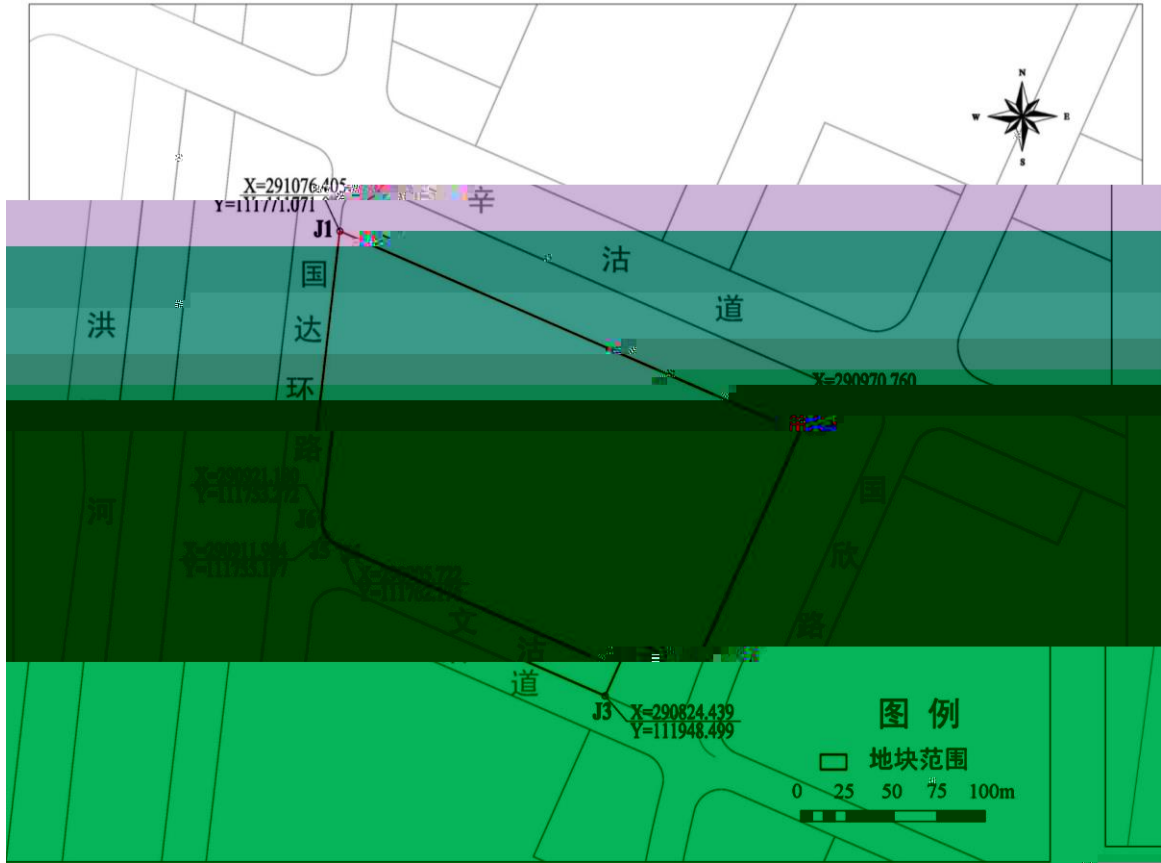
1.2



1.1

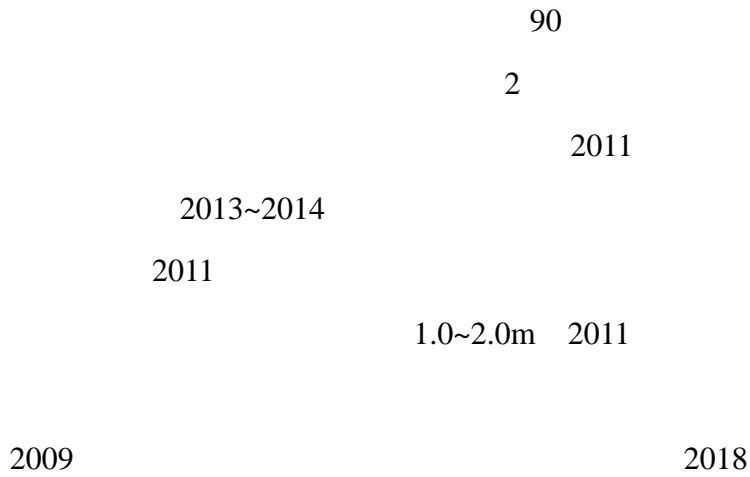
1.1

	X m	Y m
J1	291076.405	111771.071
J2	290970.760	112013.312
J3	290824.439	111948.499
J4	290905.722	111762.176
J5	290911.984	111755.177
J6	290921.180	111753.272



1.2

1.2



1.3

50m

3~5m

0.5m

2018

20~30cm

1.4

12p-02-02

2

As Cr Hg Cd

pH

Cu

Pb Hg As

Fe Al

Pb Cd As

3

3.1

2017.12

30
0.5m
8
1
1
3.2
104
13
9
1
pH
GB36600-2018
7
27
11
C₁₀~C₄₀
4
1
103
pH
~
C₁₀-C₄₀
84
26
1
pH

C₁₀-C₄₀

8

pH

7.08~7.51

C₁₀~C₄₀

1

pH

8.36

2

2.6

C8

38320.35m²